

# Garageflex Assembly Instructions

Product: Commercial Grade Threshold Barrier



## Package Contents

- Aluminium Section(s)
- Bottom Insert Seals
- Top Cap
- Concrete Fixings 6x60mm
- 1 x T30 Screwdriver Bit (for use with an electric screwdriver)
- Flat Bar Insert(s)
- Grub Screws
- Allen Key
- Fitting Instructions

## Preparation

For best results the surface should be smooth and flat and devoid of bumps or troughs. Remedial action should be undertaken to rectify uneven surfaces prior to fitting the Threshold Seal.



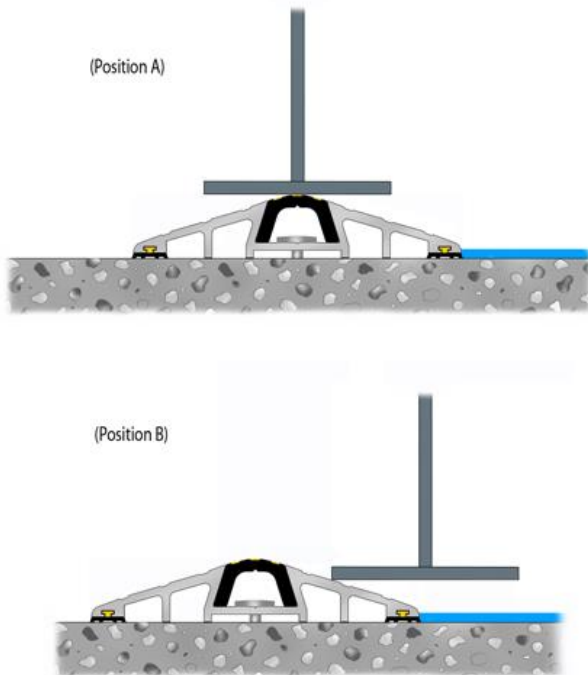
Unit 11 Westfield Farm  
Medmenham  
Buckinghamshire  
SL7 2TA

01491 579975 | [info@garageflex.co.uk](mailto:info@garageflex.co.uk)  
[www.garageflex.co.uk](http://www.garageflex.co.uk)

## Tools Required

- Tape measure
- Hacksaw
- Pencil or marker pen
- Drill
- 6mm masonry drill bit
- Electric screwdriver

### Step 1



(Position A) The Threshold Seal may be fitted to the floor directly beneath the door so that the door closes on the top of the Threshold Seal.

(Position B) The Threshold Seal may be fitted to the floor immediately behind the door if a side ground alarm system is in place.

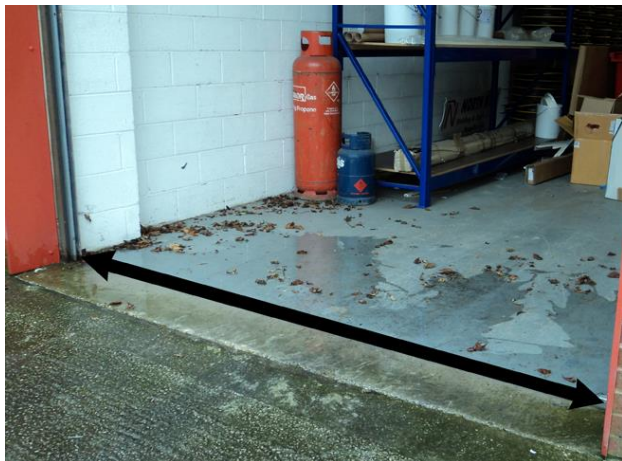
# Garageflex

Unit 11 Westfield Farm  
Medmenham  
Buckinghamshire  
SL7 2TA

01491 579975 | [info@garageflex.co.uk](mailto:info@garageflex.co.uk)  
[www.garageflex.co.uk](http://www.garageflex.co.uk)

Please note - Up and over domestic garage doors should fit the Threshold Seal behind the door (Position B)

Step 2 Measure the width of the opening.



**Garageflex**

Unit 11 Westfield Farm  
Medmenham  
Buckinghamshire  
SL7 2TA

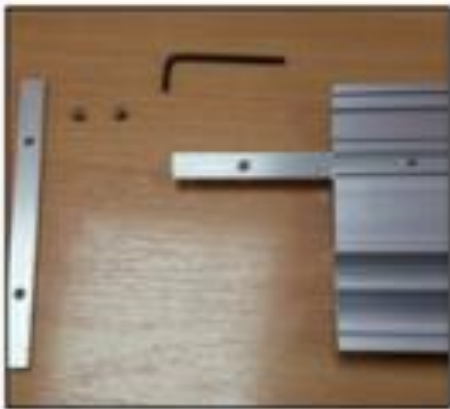
01491 579975 | [info@garageflex.co.uk](mailto:info@garageflex.co.uk)  
[www.garageflex.co.uk](http://www.garageflex.co.uk)

### Step 3



Cut the end aluminium sections to size / shape and cut the two bottom rubber seals and the top cap to the required size.

If more than one section of aluminium is to be used, join the pieces together by inserting the joining bars into the slots on the underside of the threshold and lock in place using the supplied grub screws.

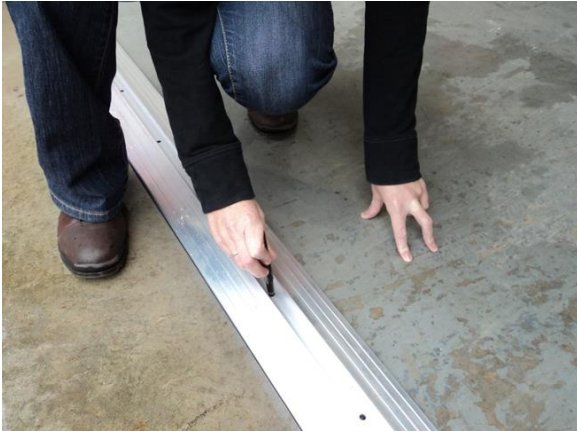


# Garageflex

Unit 11 Westfield Farm  
Medmenham  
Buckinghamshire  
SL7 2TA

01491 579975 | [info@garageflex.co.uk](mailto:info@garageflex.co.uk)  
[www.garageflex.co.uk](http://www.garageflex.co.uk)

## Step 4



**(Position A)** Position the Threshold Seal in line with the centre of the door so the door will close on the black and yellow cap that runs along the centre of the aluminum section(s).

Then pull out the black and yellow rubber inset.  
With a pencil, make a mark where the pre-drilled holes are.

**(Position B)** Position the Threshold Seal so it is tight up against the back of the door.  
Then pull out the black and yellow centre cap.

With a pencil make a mark where the holes are.

Please note If the door has an alarm fitted to the door please check the alarm connections are in place before fixing the threshold to the floor.



Unit 11 Westfield Farm  
Medmenham  
Buckinghamshire  
SL7 2TA

01491 579975 | [info@garageflex.co.uk](mailto:info@garageflex.co.uk)  
[www.garageflex.co.uk](http://www.garageflex.co.uk)

## Step 5



Remove the Threshold Seal and using a 6mm masonry drill bit, drill holes in to the floor where you have marked the ground. (Drill holes are spaced approximately every 200mm and 50mm from each end).

## Step 6



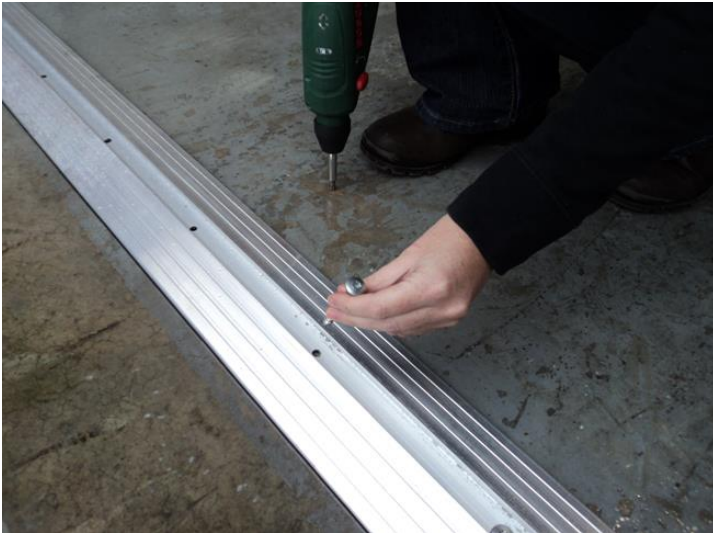
# Garageflex

Unit 11 Westfield Farm  
Medmenham  
Buckinghamshire  
SL7 2TA

01491 579975 | [info@garageflex.co.uk](mailto:info@garageflex.co.uk)  
[www.garageflex.co.uk](http://www.garageflex.co.uk)

Re-position the Threshold Seal so that the pre-drilled holes in the aluminum seal coincide with the holes drilled in the concrete floor. Starting from one end, place each fixing screw into a hole. There is no need to use plugs as the fixings have a cut thread design that enables them to be drilled into concrete.

#### Step 7



Using an electric screwdriver with the screwdriver bit T30, tighten the fixing until the screw is approximately 5 mm from going all the way in.

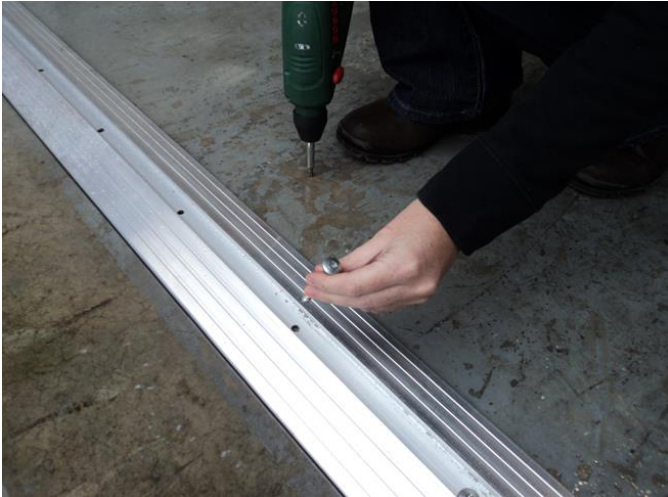


Unit 11 Westfield Farm  
Medmenham  
Buckinghamshire  
SL7 2TA

01491 579975 | [info@garageflex.co.uk](mailto:info@garageflex.co.uk)  
[www.garageflex.co.uk](http://www.garageflex.co.uk)



## Step 8



Apply pressure on the Threshold Seal by standing on it. This will compress the two side seals. Then tighten the fixing fully.

**Please note** do not over tighten the screws.

Continue this process until the threshold is secured to the ground.

The logo for Garageflex, featuring the word "Garageflex" in a bold, black, sans-serif font. The letter "G" is stylized with an orange outline that forms a roof-like shape above it. The letter "x" has a horizontal orange line through its middle.

Unit 11 Westfield Farm  
Medmenham  
Buckinghamshire  
SL7 2TA

01491 579975 | [info@garageflex.co.uk](mailto:info@garageflex.co.uk)  
[www.garageflex.co.uk](http://www.garageflex.co.uk)



## Step 9



Clean out the channel with a clean cloth to remove excess dirt. Starting from one end of the threshold, pinch the legs of the rubber black and yellow inset and push it in to the top of the threshold until it 'snaps into place'. Continue this process with the remainder of the threshold, taking care to ensure that it is firmly pushed down.

If you have any questions or need some advice regarding your installation, please do get in touch and we will do our best to help.

You can contact us on:

01491 579975 | [info@garageflex.co.uk](mailto:info@garageflex.co.uk)  
[www.garageflex.co.uk](http://www.garageflex.co.uk)

The logo for Garageflex features the word "Garageflex" in a bold, black, sans-serif font. Above the letter "a" in "Garage" is a stylized orange outline of a house roof. A horizontal orange line runs under the "a" and "r" in "Garage".

Unit 11 Westfield Farm  
Medmenham  
Buckinghamshire  
SL7 2TA

01491 579975 | [info@garageflex.co.uk](mailto:info@garageflex.co.uk)  
[www.garageflex.co.uk](http://www.garageflex.co.uk)